

Showermate eco Pumps

There's nothing more irritating than a tap or a shower that's no more than a trickle. Thankfully, the new Showermate eco from Stuart Turner means it's a problem you need never worry about again. Not only will Showermate eco give your water pressure a much needed boost.

They can be used for:

Twins

- Bath/basin mixer tap.
- Fixed plate or single function shower.
- Multi-function shower.
- 2 x multi-function showers.

Designed to suit any tank fed, open vented system, the new Showermate eco pumps offer the ultimate solution to poor performance.

Single

- Boost water to a single tap.
- Pump blended water.

Features include:

- Fully automatic.
- Supplied complete with 15 mm flexible hoses.
- Supplied pre-wired with 1.5 metre cable and anti-vibration feet.
- Reassurance of up to a 2-year guarantee (subject to conditions)
- Compact and robust design.

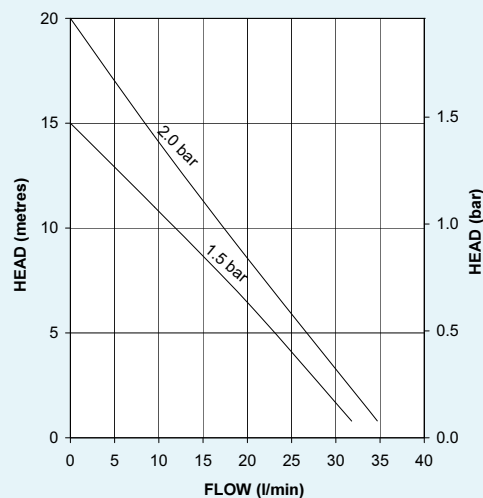
2

year guarantee!

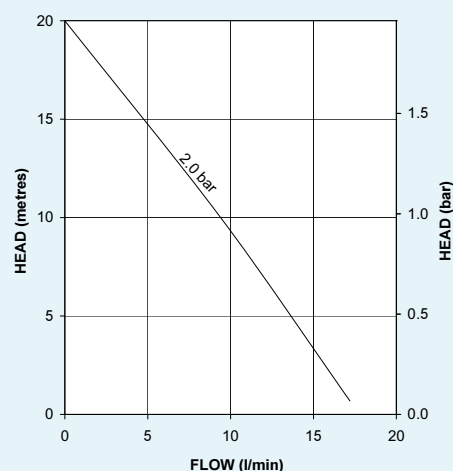
subject to
conditions



Showermate Eco Twin Pump

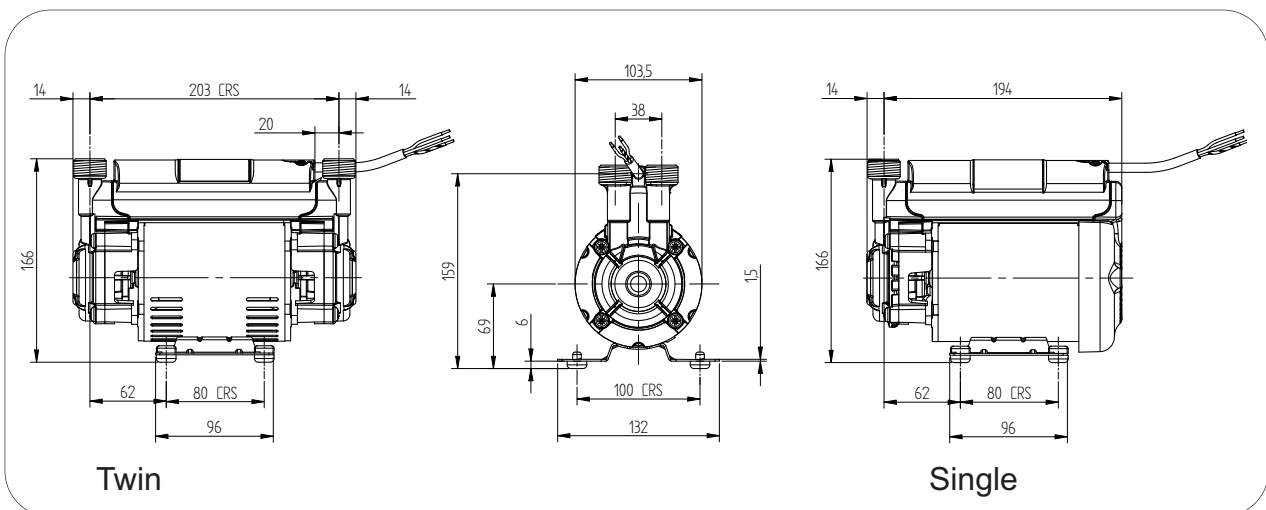


Showermate Eco Single Pump



Showermate eco Pumps

| System Booster Pumps | S1.5 bar Twin 46502 | S2.0 bar Twin 46500 | S2.0 bar Single 46503 |
|---|---------------------------|---------------------------|-----------------------------|
| Maximum Flow Litres Per Minute | 32 | 35 | 17 |
| Maximum Head Valve Closed (bar) | 1.5 | 2.0 | 2.0 |
| Maximum Inlet Static Head (Metres) | 10 | 10 | 10 |
| Hoses Flexible 15 mm Push-In | ✓ | ✓ | ✓ |
| Pump Connection G $\frac{3}{4}$ " | ✓ | ✓ | ✓ |
| Carbon Ceramic Mechanical Seal | ✓ | ✓ | ✓ |
| Flow Switch Sensitivity approx. 0.8 l/min | ✓ | ✓ | ✓ |
| WRAS Compliant 65°C max | ✓ | ✓ | ✓ |
| Power Supply 230/1/50 | ✓ | ✓ | ✓ |
| Enclosure Rating to BS EN 60529 | IP22 | IP22 | IP22 |
| Motor Type, Induction, Permanent Capacitor, Auto Resetting Protective Thermotrip | ✓ | ✓ | ✓ |
| Power Consumption (Watts) | 385 | 420 | 215 |
| Full Load Amps | 1.7 | 1.8 | 1.0 |
| Fuse Rating Amps | 5 | 5 | 5 |
| Pre-Wired | ✓ | ✓ | ✓ |
| Duty Rating Intermittent (S3) 30 mins on/ 30 mins off @ 9 l/min | ✓ | ✓ | ✓ |
| Length mm | 231 | 231 | 208 |
| Width mm | 132 | 132 | 132 |
| Height mm without flexibles | 166 | 166 | 166 |
| Gross Weight Packed (kg) | 4 | 4 | 3.2 |



Stuart Turner Ltd
Henley-on-Thames
Oxfordshire RG9 2AD
England
Telephone: +44 (0)1491 572655
Fax: +44 (0)1491 573704

Email:
pumps@stuart-turner.co.uk
Web:
www.stuart-turner.co.uk

V.A.T. REG. No. 199 0987 92.
Registered in England No. 88368.
Registered Office:
Market Place, Henley-on-Thames